

## World Class Gym uses Iris Recognition for membership

The World Class Gym in Iceland has a membership database over 40,000 people, and is the largest gym in the country. They are built alongside the National Olympic Swimming Pool, where there is access between the gym and pool, as members of the gym can use the indoor and outdoor swimming facilities.

When the owners were looking for a membership system, they needed something that would only allow active members access to the gym. They also needed to prevent people who are only using the swimming pool from entering the gym.

They looked at a number of non-biometrics systems, however each one was not suited to this application. They couldn't use pin numbers, as these could be passed on, as could cards or tokens, which may also have been lost while swimming or affected by the water. They also looked at other biometrics, however due to the number of members they had, and the fact they needed true identification, these were not an option.



LG IrisAccess Cameras



Main Entry to the Gym

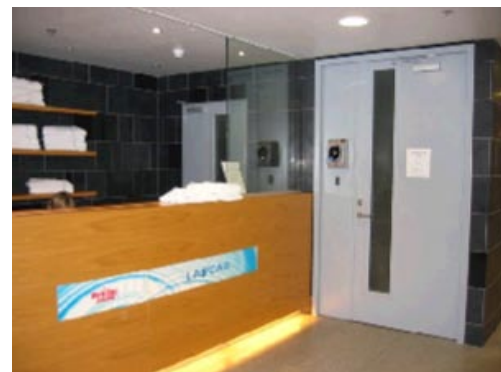
When they looked at Iris Recognition they realised this was the ideal solution for their requirements. Due to the way the technology works, they could perform true identification on thousands of members extremely quickly. As it is totally non contact, Iris Recognition is hygienic and not affected by members using the gym or swimming pools.

All members now use Iris Recognition to enter the gym, either from the front entrance or through the connecting doors with the swimming pools.

The gym also has a 2 tier membership scheme, with standard and VIP options. The VIP has a separate changing room, and access to the sauna and steam rooms. Both of these are controlled by Iris Recognition, to ensure only the VIP members have access to these areas.

The system is linked into the membership records, so if a membership runs out, the member's access rights are stopped immediately.

It is also extended out to satellite gyms, using the same database, so they can enrol and manage records as needed.



Access to the Steam Room and Sauna